



# DE602-16

Rev: 0

## Specifications <sup>1</sup>

Throat Diameter	<b>1.4"</b>
Nominal Impedance	<b>16 Ω</b>
Minimum Impedance	<b>10.6 Ω</b>
Power Handling ( 1.2 - 20 kHz )	
Nominal <sup>2</sup>	<b>80 W</b>
Continuous Program <sup>3</sup>	<b>160 W</b>
Sensitivity (1W/1m) <sup>4</sup>	<b>108 dB</b>
Frequency Range	<b>1 - 18 kHz</b>
Recommended Crossover <sup>5</sup>	<b>1.2 kHz</b>
Voice Coil Diameter	<b>65 mm</b>
Winding Material	<b>Aluminium</b>
Inductance	<b>0,15 mH</b>
Diaphragm Material	<b>Titanium</b>
Flux Density	<b>1,55 T</b>

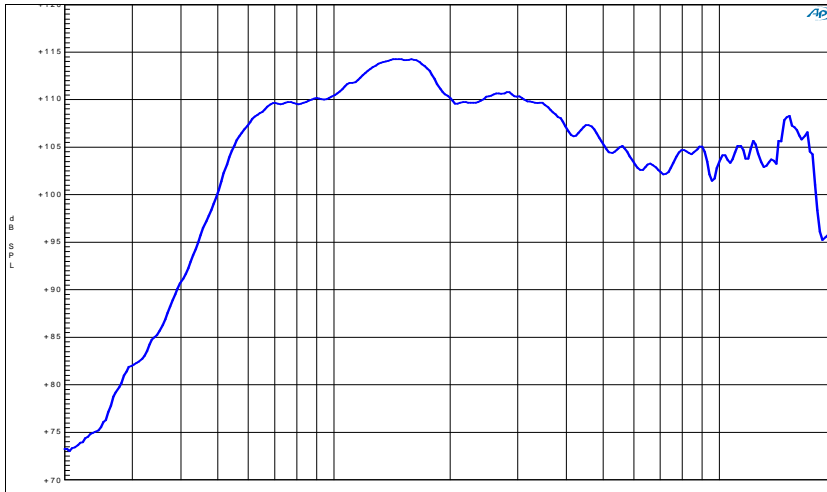
- (1) Driver mounted on B&C ME 90 horn
- (2) 2 hours test made with continuous pink noise signal (6 dB crest factor) within the specified range. Power calculated on rated minimum impedance.
- (3) Power on Continuous Program is defined as 3 dB greater than the Nominal rating.
- (4) Applied RMS Voltage is set to 4V for 16 ohms Nominal Impedance. Average SPL from 1000 to 18000 Hz
- (5) 12 dB/oct. or higher slope high-pass filter.

## Mounting Information

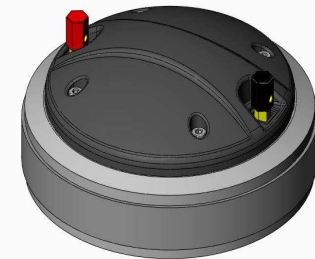
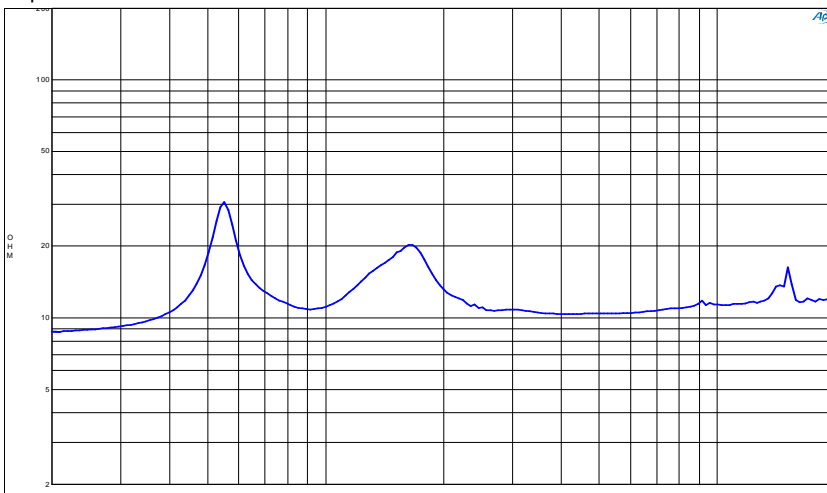
Four M6 holes 90° on 102 mm (4 in) diameter

Overall Diameter	<b>145 mm</b>
Depth	<b>65 mm</b>
Net Weight	<b>3,9 kg</b>

Frequency Response



Impedance



09/11/2011