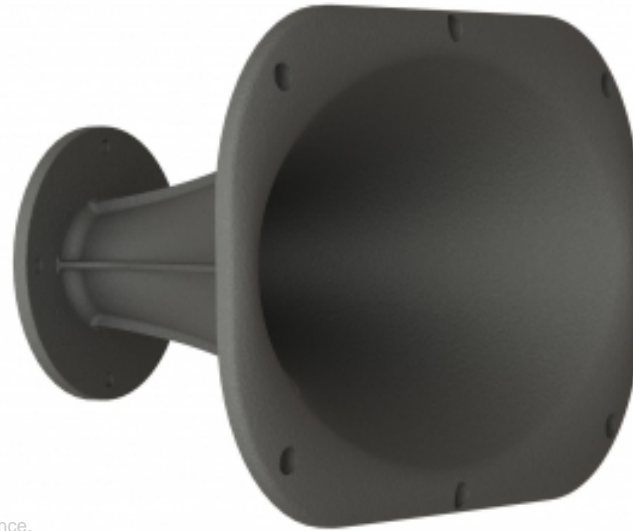


KEY FEATURES

- New generation V-Shape Horn - 1.4 in throat entry
- 60° x 40° differential dispersion
- Constant directivity on horizontal plane
- Mathematic on vertical plane for best acoustic performar
- Cast Aluminum framework for high heat dissipation



MEASURE CONDITIONS

Measurement executed in free air (1m) in semi-anechoic chamber.
 Polars were acquired by placing the unit on a computer controlled turntable inside chamber.
 Applied RMS Voltage is set to 2.83 V for 8 ohm nominal impedance.

GENERAL SPECIFICATIONS

Throat Diameter	1.4 in - 35.56 mm
Minimum Crossover Frequency (1)	800 Hz
Frequency Range	0.5 ÷ 20 kHz
Material	Cast Aluminum
Horizontal Coverage Angle (2)	60 degree
Vertical Coverage Angle (2)	40 degree
Directivity Index (2) (3)	8.4 dB
Horizontal Progression	Constant Directivity
Colour	Black Sandblasted Finish
Vertical Progression	Hyperbolic Cosine
Total Volume Size	3.14 dm ³ (0.11 ft ³)

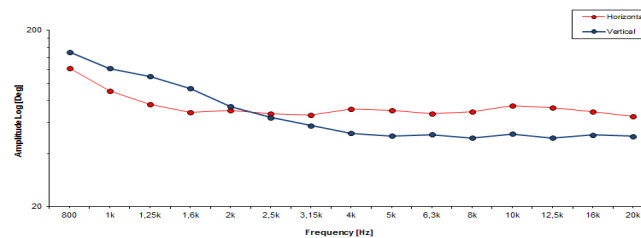
NOTES

- (1) Free space acoustic loading (4π sr).
- (2) Coverage value -6 dB is averaged on frequency range 1.25 ÷ 12.5 kHz.
- (3) Measured step is 5° one-third octave polar, averaging values on horizontal and vertical planes.

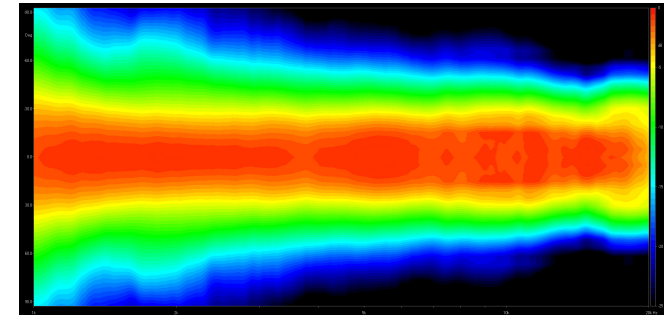
MECHANICAL & SHIPPING INFORMATIONS

Net weight	1.9 Kg (4.19 lb)
Mouth Height	209 mm (8.23 in)
Mouth Width	330 mm (13 in)
Depth	191 mm (7.52 in)
Mouth Mounting Holes	6 x 6.3 mm (0.25 in)
Shipping Box Size (mm)	345 x 225 x 240
Shipping Box Size (in)	13.6 x 8.9 x 9.5

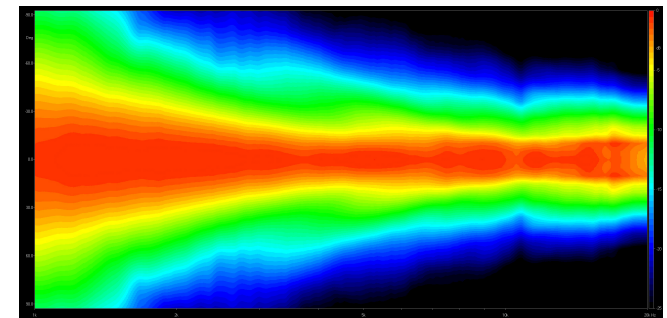
BEAMWIDTH



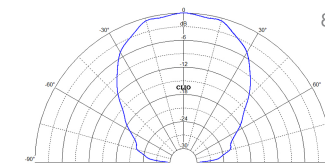
HORIZONTAL DIRECTIVITY



VERTICAL DIRECTIVITY



HORIZONTAL POLAR PATTERN



VERTICAL POLAR PATTERN

