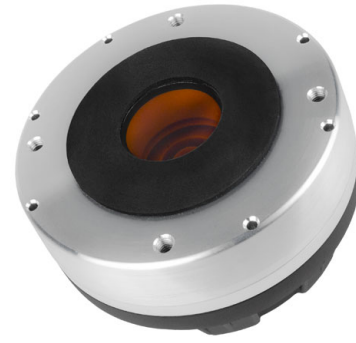


HF1460

1.4" - 120 W - 109 dB - 8 Ohm



NOMINAL SPECIFICATIONS

| | |
|------------------------------------|---|
| Throat Diameter | 35.8 mm (1.4 in) |
| Overall Diameter | 120 mm (4.7 in) |
| 90° Mounting Holes Diameter (4xM6) | 102 mm (4.02 in) |
| Depth | 65 mm (2.6 in) |
| Net Weight | 2.0 kg (4.5 lb) |
| Shipping Box (Single carton box) | 185 x 170 x 102 mm (7.3 x 6.7 x 4.0 in) |
| Shipping Weight | 2.1 kg (4.6 lb) |

PART NUMBER

| | |
|----------------------------------|----------|
| Faston Terminals - 8 Ohm Version | 00864360 |
|----------------------------------|----------|

NOTES:

- (1) 2 Hours Test According to AES 2-1984 Rev. 2003
- (2) Maximum power is defined as 3dB greater than nominal power.
- (3) 12 dB/oct or higher slope high-pass filter
- (4) Averaged within the frequency range
- (5) The phase plug is recessed from the driver's exit which is at the end of a conical adaptation horn.

TECHNICAL PARAMETERS

| | |
|------------------------------------|---|
| Nominal Impedance | 8 Ohm |
| Minimum Impedance | 7 Ohm |
| AES Power Handling (1) | 120 W |
| Maximum Power Handling (2) | 240 W |
| Minimum Crossover Frequency (3) | 1 kHz |
| Sensitivity (1W/1m) (4) | 109 dB |
| Frequency Range | 0.6-18 kHz |
| Voice Coil Diameter | 86 mm (3.4 in) |
| Winding Material | Al |
| Former Material | Kapton |
| Diaphragm Material | Carbon Fiber |
| Diaphragm Shape | Dome |
| Winding Depth | 3.4 mm (0.13 in) |
| Magnetic Gap Depth | 4 mm (0.16 in) |
| Flux Density | 2.2 T |
| Magnet | Neodymium Ring |
| Re | 5.6 Ohm |
| Phase Plug Design | Annular |
| Exit Angle (5) | Cylindrical |
| NET Air Volume filled by HF Driver | 0.65 dm ³ (0.023 ft ³) |

