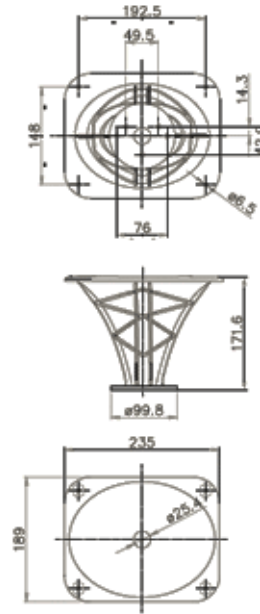




# LTH102 HF Horns



## NOMINAL SPECIFICATIONS

Throat Diameter	25.4 mm (1 in)
Frequency Range	0.8÷20 kHz
Reccomended Crossover Frequency (1)	1 kHz
Horizontal Nominal Coverage (-6dB) (3)	60°
Vertical Nominal Coverage (-6dB) (3)	50°
Directivity Index (3) (4)	9.5 dB
Material	Al
Mouth Height	189 mm (7.44 in)
Mouth Width	235 mm (9.25 in)
Depth	171.6 mm (6.76 in)
Mouth Mounting Holes (4x)	6.5 mm (0.26 in)
Net Weight	1.2 Kg (2.65 lb)
Shipping Weight	1.45 Kg (3.20 in)
Shipping Box	207x268x185 mm (8.15x10.55x7.28 in)

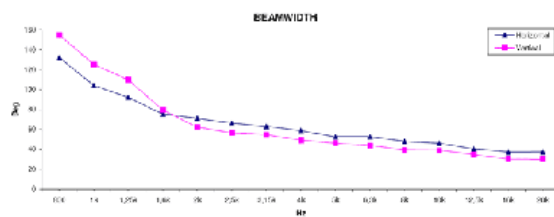
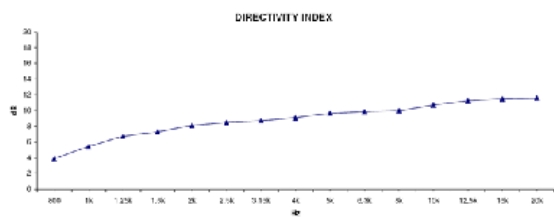
## NOTES

(1) 4 π sr acoustic loading

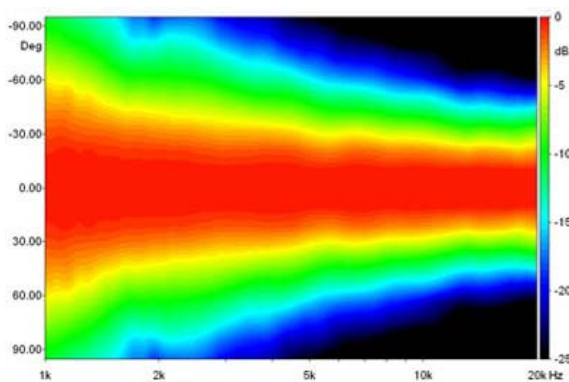
(3) Average value in frequency range: 1,6÷16 KHz

(4) Average values on horizontal and vertical planes

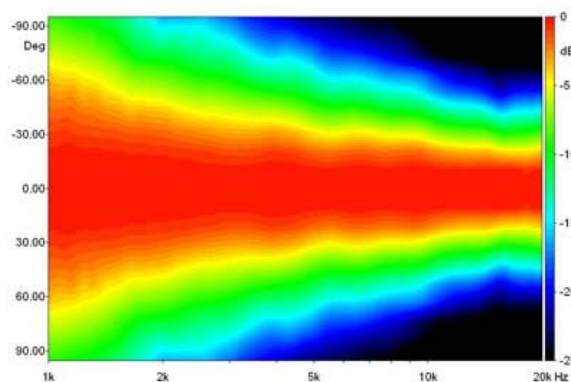
# CURVES



# BEAMWIDTH

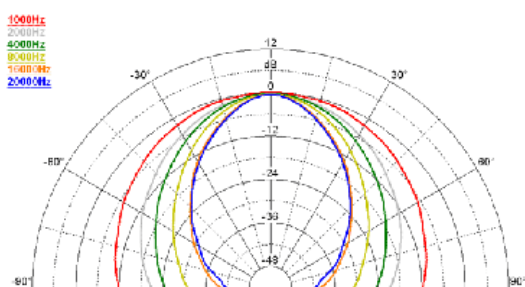


Horizontal Beamwidth

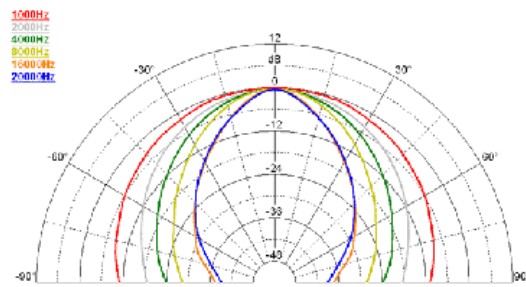


Vertical Beamwidth

# POLAR PATTERN



Horizontal Polar Pattern



Vertical Polar Pattern