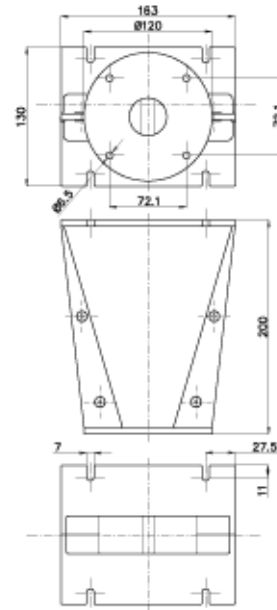




WG141 HF Horns



NOMINAL SPECIFICATIONS

Throat Diameter	36.5 mm (1.4 in)
Frequency Range	0.8÷20 kHz
Reccomended Crossover Frequency (1)	0.8 kHz
Horizontal Nominal Coverage (-6dB) (2)	110°
Material	Al
Mouth Height	163 mm (6.4 in)
Mouth Width	130 mm (5.1 in)
Depth	200 mm (7.9 in)
Mouth Mounting Holes (4x)	7 mm (0.28 in)
Net Weight	1.4 Kg (3.1 lb)
Shipping Weight	1.65 Kg (3.6 in)
Shipping Box	232x142x179 mm (9.1x5.6x7.0 in)

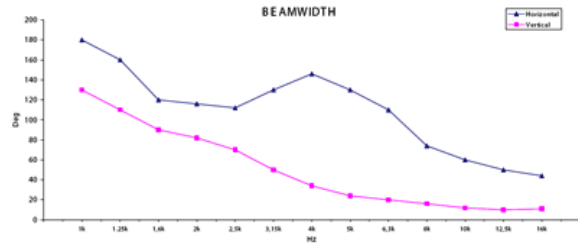
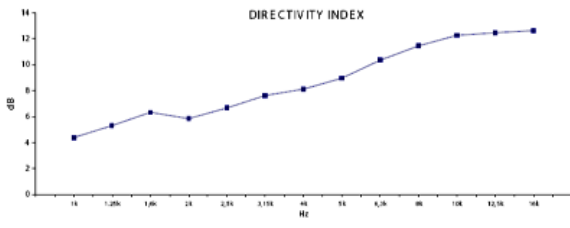
NOTES

() Sold only in combination with a FaitalPRO 1.4" HF Driver

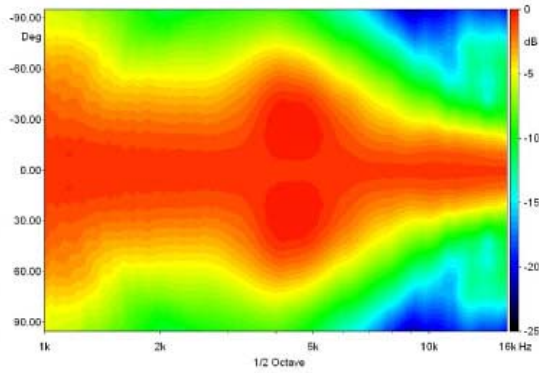
(1) 4 π sr acoustic loading

(2) Average value in frequency range: 1÷16 KHz

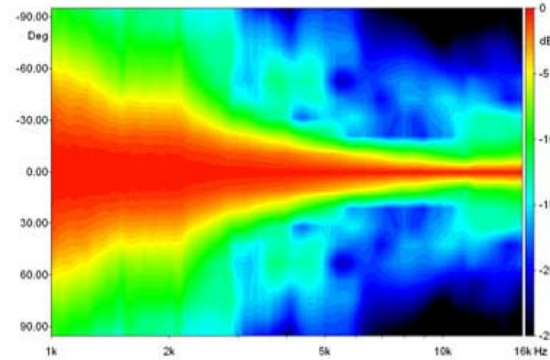
CURVES



BEAMWIDTH

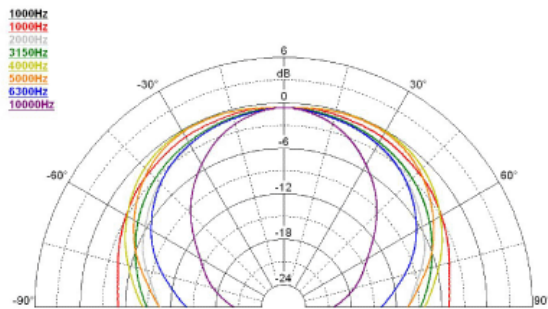


Horizontal Beamwidth

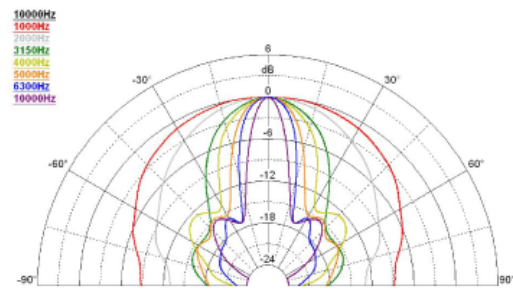


Vertical Beamwidth

POLAR PATTERN



Horizontal Polar Pattern



Vertical Polar Pattern